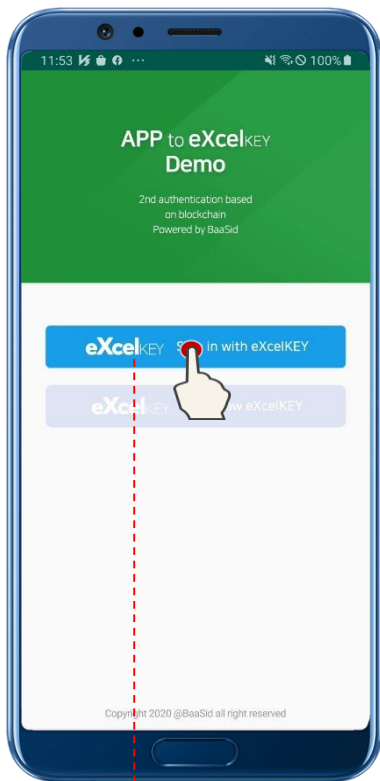


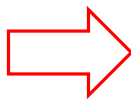
eXcelKEY App to App Service Flow

1. Register 2nd Authentication

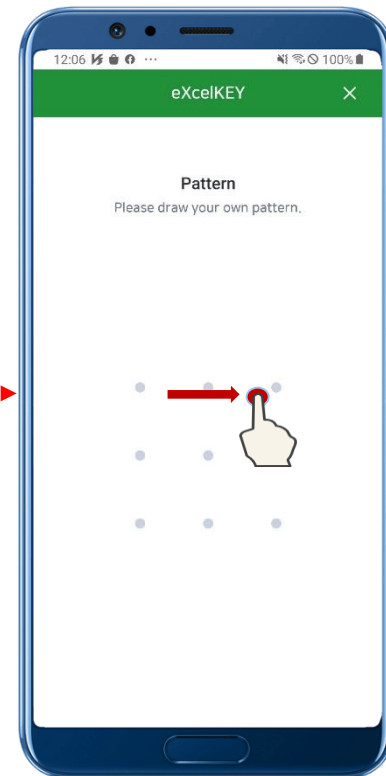
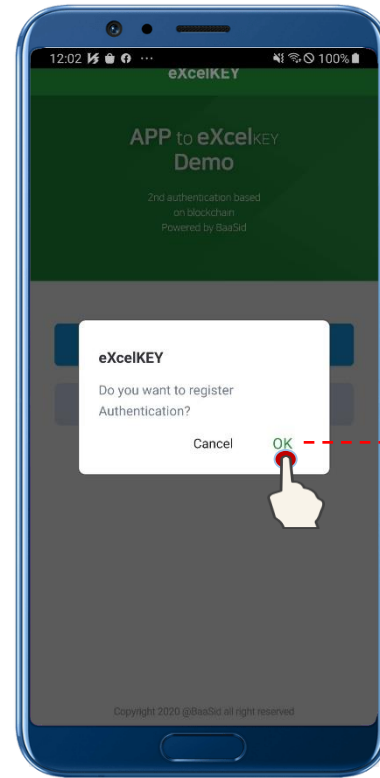
Mobile Sample APP



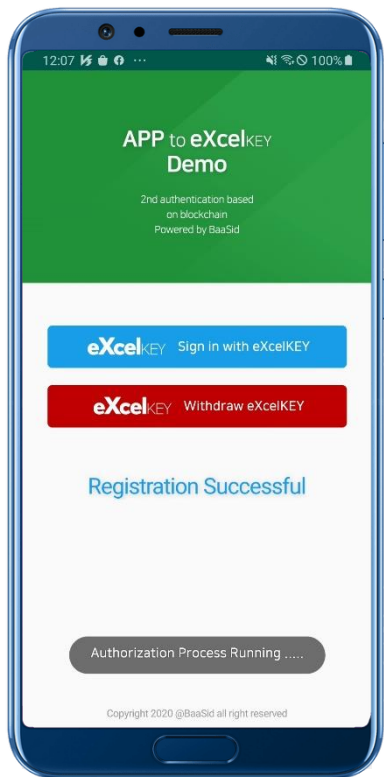
[Use Function]
mAuthLib.signIn()



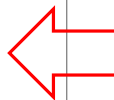
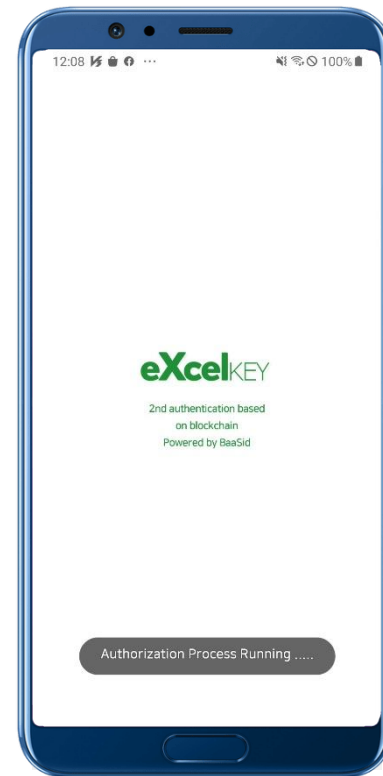
eXcelKEY App



Mobile Sample APP



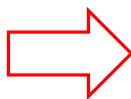
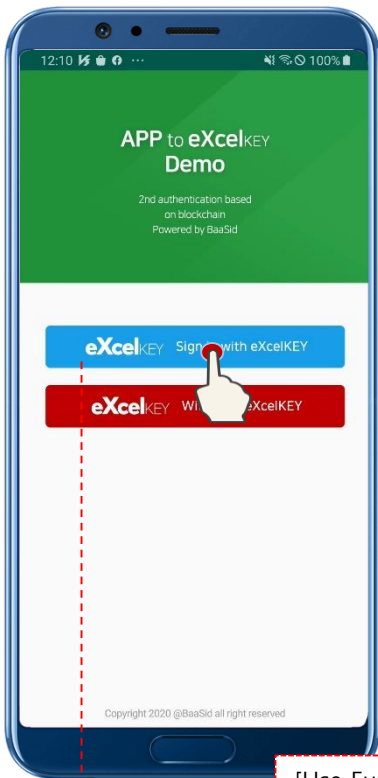
eXcelKEY App



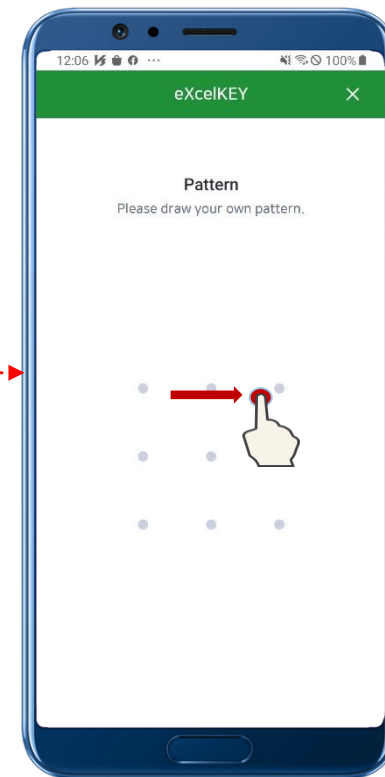
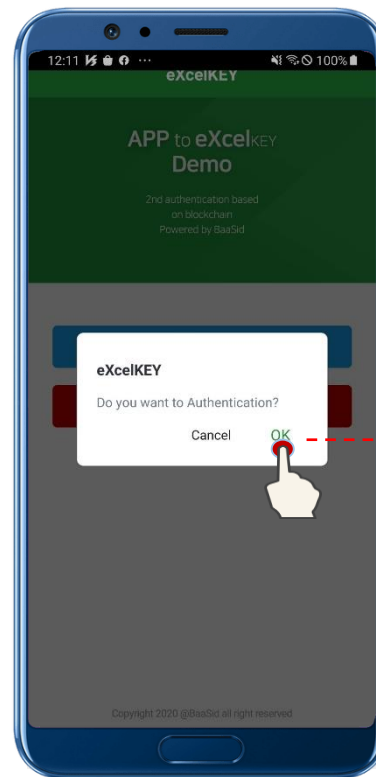
2. Processing 2nd authentication

Mobile Sample APP

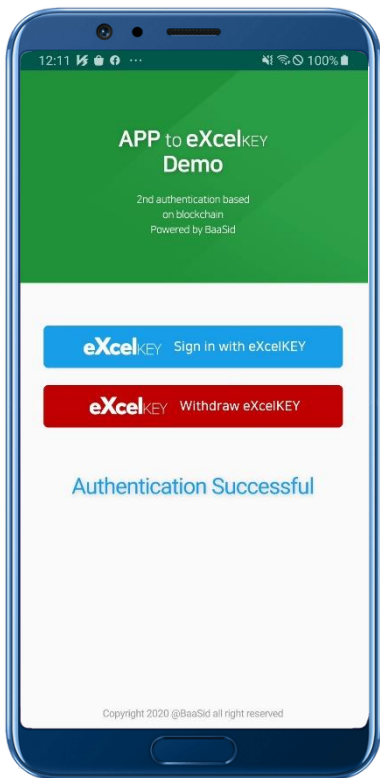
eXcelKEY App



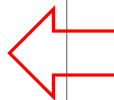
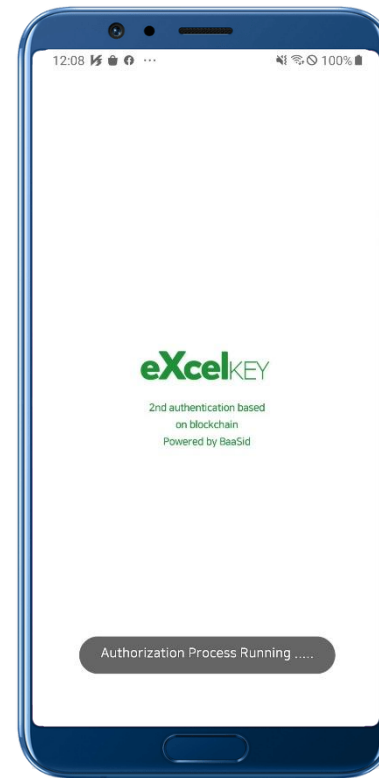
[Use Function]
mAuthLib.signIn(AccessToken)



Mobile Sample APP



eXcelKEY App

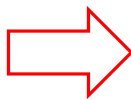


3. Withdraw 2nd authentication

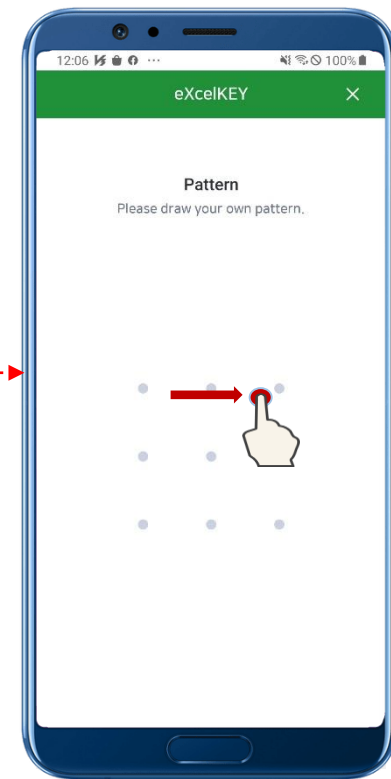
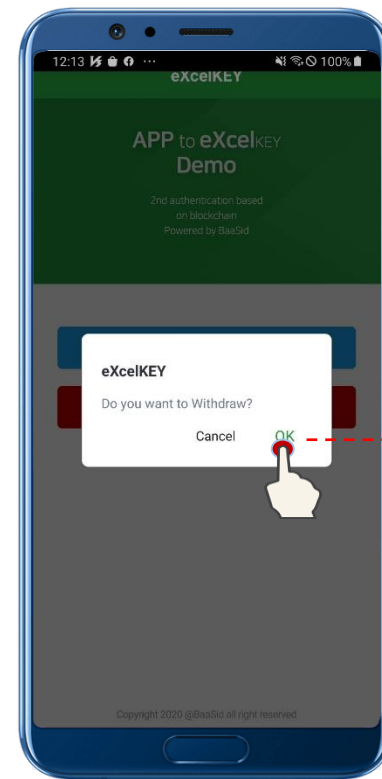
Mobile Sample APP



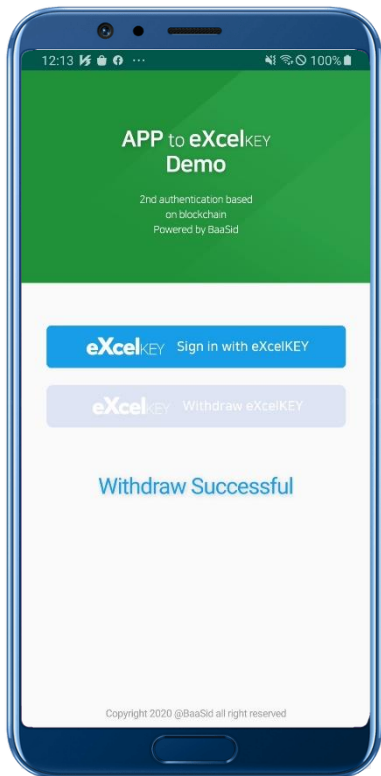
[Use Function]
mAuthLib. withdraw(AccessToken)



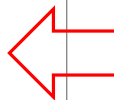
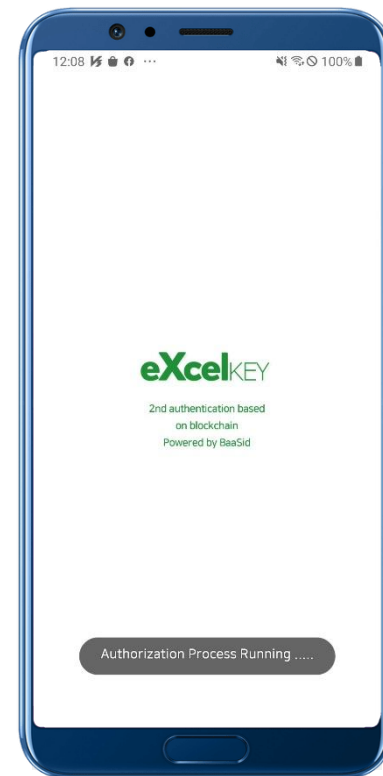
eXcelKEY App



Mobile Sample APP

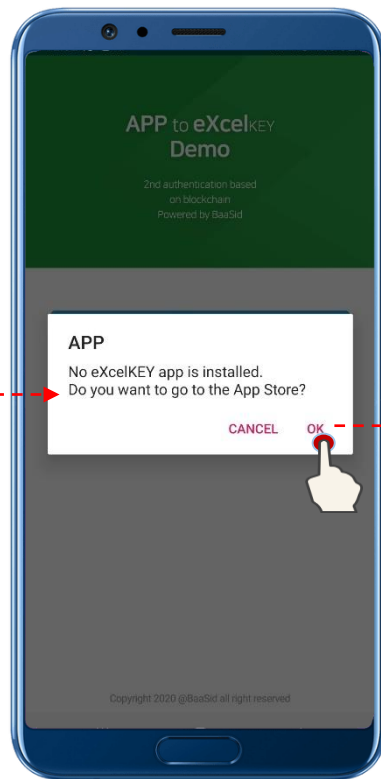
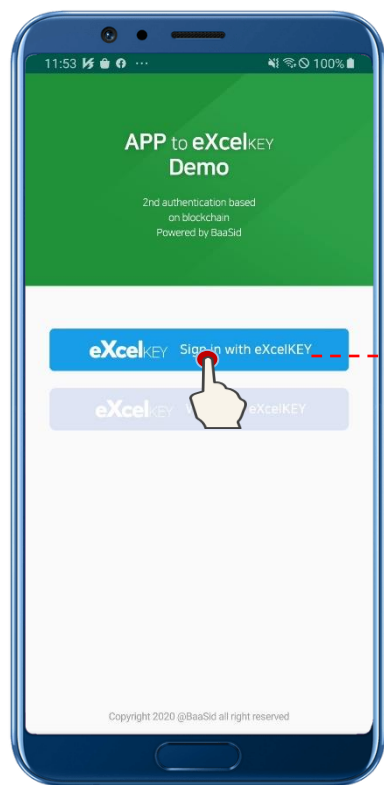


eXcelKEY App



4. Exception error

Mobile Sample APP



Google play(App Store)



Mobile Sample APP

eXcelKEY App

